

First-Aid Kit for your Ship

SHiP + AiD®

船の救急箱 シップエイド

Ready for any emergency in this one!

《 Lineup of SHiP+AiD 》

- **SHiP+AiD** : Standard model
- **SHiP+AiD Light** : For fishing boat, life boat and pleasure boat
- **SHiP+AiD Deluxe** : Full set model including "Red Epoxy"



※The picture is SHiP+AiD (Standard model)

ALL IN ONE PACKAGE !!
Anyone can easily and quickly repair ships !

- Repair of various piping leaks (water, sea water, air & oil)
- Repair of aux. steam piping leaks
- Repair of exh. gas piping leaks
- Repair of hydraulic piping leaks
- Repair of pump casing
- As a reinforcing material to a thinned portion
- Alternative repair at areas that can not be welded
- Repair of expansion joint crack
- Repair piping under pressure

『SHiP+AiD』 supplies you the **SAFETY** & **RELIEF**.

High adhesion & pressure repair agent

RED EPOXY



Red Label



White Label

NEW

RedEpoxy
READY IN MINUTES

DRINKING
WATER LINE
OK

For repairing & adhesion of any metals & resins !

- Aluminum alloys, Cast irons, Copper & Copper alloys (Brass & Bronze), Magnesium and Magnesium alloys, Carbon steels, Stainless steels, Galvanized surface, PVC, CPVC, ABS, Fiberglass, Black polypropylene, Kyner.



Red Label / Base Resin White Label / Hardener
Epoxy Resin
Content ea. 14.8ml

Approval of Food Sanitation Act No.370/595

Wow!

VERY HIGH PRESSURE

21

MPa

VERY HIGH ADHESION

※ It depends on the usage situation

〈Features〉

- High adhesion & pressure
- Easy & Quick
- Chemical resistance
- Quick repair by heat curing (with heat gun)
- Temp. limit -40°C ~ 176°C (Continuous use 148°C)

Amazing adhesion which becomes a substitute for welding !

You can repair hydraulic piping with this !

〈How to use〉※ Use Heat gun

1. Remove moisture and oil from repair area and coarsen the surface with sandpaper.
2. Mix the base resin and hardener from the container in the same amount and leave it for 10 minutes.
3. Warm up the repaired area and uniformly apply red epoxy.
4. If you heat the repaired area with a heat gun (140°C) for about 20 minutes, it turns from red to gold.
5. Curing is complete when it turns to gold. It is ready to use after return to normal temperature naturally.
6. If the heating temperature is high, it bubbled and burn up. In that case, please retry from the beginning.

Excellent Chemical Resistance

CFC, Petroleum, Toluene, Xylene,
Plant Oil, Animal Oil, Lubricant Oil,
Hydraulic Fluid & more



Take the same amount of base resin and hardener.



Mix and leave for 10 minutes



Apply after warming up the repair area and turn to gold after 20 min heating.



Curing is completed after return to natural temperature naturally.



Heat Gun (1500W / 100V / 60°C~550°C)

※ We can arrange a heat gun, if you need it.



PIPING



HOUSE



CAR



SHIP

Usage is versatile



Adhesive

Instant adhesion repair material

RAPIDFIX

**VERY
POPULAR**

RAPIDFIX™

DUAL ADHESIVE SYSTEM

**DRINKING
WATER LINE
OK**

Instant repair of all materials !!

A new sense of repair agent that can be repaired to **holes, cracks, chips, breakage** by using liquid and powder.

※Even liquid alone can be used as an adhesive.



※When you want to increase strength, please repeat the above work.

※After hardening, rasping, holes and screw processing, painting are also possible.

● Metal, PVC, Plastic, Rubber, Wood, Pottery, Glass, FRP, Leather, and any materials

Surprising instant repair!

**Liquid and powder,
in either order OK**

LIQUID

PLUS

POWDER



One set package

Super Strong

Material	Adhesive : Ethyl cyanoacrylate (10ml) Welding powder : Oxide glass (10ml)
Curing time	A few seconds ~ several tens of seconds
Complete curing time	24 hours
Temperature	-55°C ~ 95°C
Pressure	50 ~ 70kg/cm ² (It depends on the repair condition.)
JAN code	4560361000416

※Please keep this product away from direct sunlight.
Please do not put it in an excessively hot and cold place.
Please do not refrigerated / frozen storage.

Approval of Food Sanitation Act No.370/595

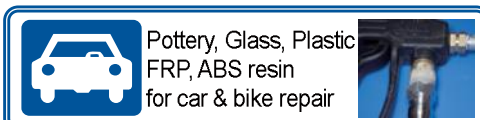
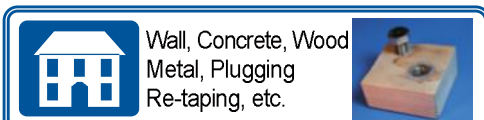
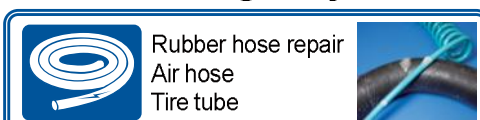
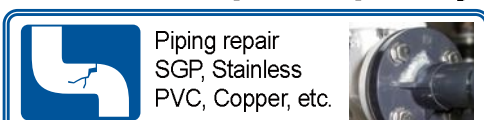
Approval of ISO 10993-5

10 sets carton

※PP, PE, Styrene resin, Silicon, Paper
Flourine are not applied.

※The liquid does not cure in the container.

**It can be used for a wide range of applications
and can respond quickly even in emergency case.**



◆ Chemical resistance
○=Conformity ×=Non-conformity

Ethanol	○
Acetone	×
Nitrite	○(×Concentrated)
Gasoline	○
Benzin	○
Toluole	○
Xylole	○
Hydrochloric acid	○(×Concentrated)
Sulfuric acid	○(×Concentrated)
Phosphoric acid	○(×Concentrated)
Sodium hydroxide	○(×Concentrated)



You can watch the detailed usage
of this product with the video.

www.rapid-fix.com

Please scan the QR code
and go to the maker site.

Epoxy Putty RECTOR SEAL All-purpose putty

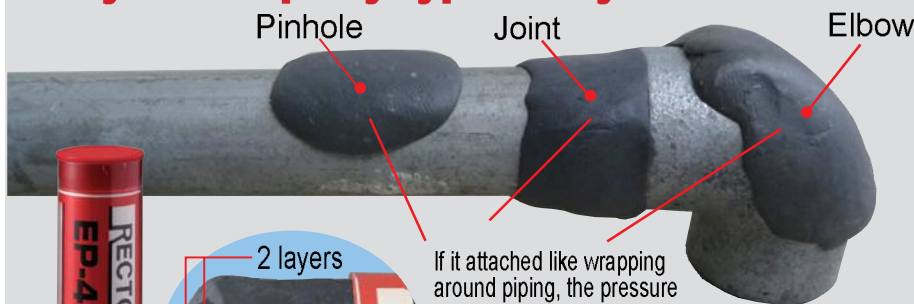
TEMP.
-40~200°C

Tough & Durable !

Harden like a metal in **15~20min** after kneading.

Just cut and knead it

Easy to use putty type everywhere



If it attached like wrapping around piping, the pressure resistance will increase.

This product has layers of two components, combining by kneading and hardening.



EP-400



EP-200



EP-200W



EP-200 (24pcs)



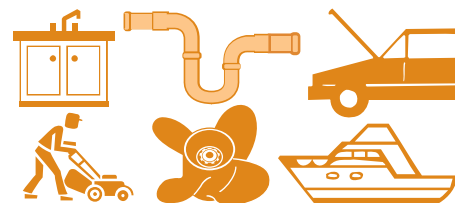
EP-400 (12pcs)

Approval of Food Sanitation Act No.370/20



The use is diverse, such as repairing holes and cracks, reforming the surface.

- ◆ Piping (Stainless, Copper, Steel, PVC)
- ◆ Air conditioner (Duct, Unit, Fan)
- ◆ Electrical machinery (Housing motor, Shaft)
- ◆ Industry (Equipment, Pump casing)
- ◆ Car (Oil tank, Engine block, Fan, Muffler, Oil pan, Radiator)
- ◆ Shipping (Hull, Piping, Pump casing)
- ◆ Agriculture (Tools, Machinery)
- ◆ DIY (Tile, Wall, Piping, Cabinet, Door)



RECTOR SEAL

	EP-200	EP-200W	EP-400
Contents	56g	56g	112g
Color	Gray	White	Gray
Material	Epoxy resin		
Hardness	Shore D85		
Temperature	-40~200°C		
Pressure	10kg/cm ²		
Tensile strength	420kg/cm ²		
Compressive strength	1,260kg/cm ²		
Elastic coefficient	6×10 ⁵ PSI		
Shear strength	49kg/cm ²		
Insulation properties	400Volts/mil 0.125in		
Volume resistance	5×10 ¹⁵ Ω·cm		
JAN code	4560361000010	4560361000034	4560361000041

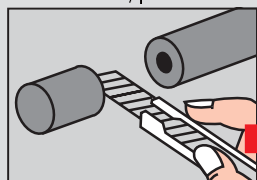
◆ Chemical resistance

○=Conformity ×=Non-conformity

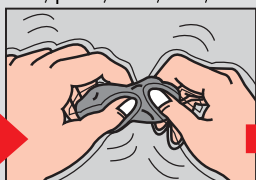
10%Acetic acid	○
2%Nitric acid	○
10%Sulfuric acid	○
10%Hydrazine	○
Acetone	○
Xylole	○
Gasoline	○
Methanol	○
Ethanol	○
10%Hydrochloric acid	○
Caustic soda	○

<How to use>※ Please repair under non-pressure.

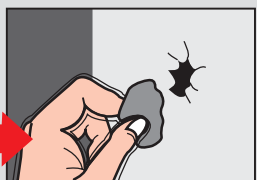
※ First of all, please remove dirt, paint, dust, rust, oil etc. on the adhesion surface.



① Remove the packaging film and cut it in the required amount.



② Knead it for 1~2mins until there is no color unevenness.



③ Embed and mold so as to press against the adhesive / filling spot.

- ※ If you use a wet cloth or wet spatula, it will be beautiful finished.
- ※ When the temperature is low, the time to complete hardening becomes longer. Please use at temperature above 5°C.
- ※ Please be careful as excessive kneading and redoing of molding after adhesion will cause poor adhesion and poor hardening.
- ※ Recommend to combine with Quick Tape and Arlon Tape for piping repair.

- Cover Rector Seal by Quick Tape for additional strength.
- Cover Arlon Tape by Rector Seal for protection.

④ Harden and adhere in 15~20mins. It can be done tapping, buffing, painting and etc. after completed hardening (1 hour)

Self fusing silicon tape ARLON TAPE GRAY

Not slippery in water !

TEMP.
-50~200°C

It's available for Air, Water,
Sea water, and Aux. steam.

DRINKING
WATER LINE
OK

Just wind while
pulling strongly !

You can stop leakage
under pressrue !



Width 25mm / 38mm
Please use according
to the pipe diameter.

ARLON TAPE GRAY

	Product size	Applicable dia.	Qty	JAN code
SRG-2	W 25 x L 2000mm	Under 50A	24	4560361000331
SRG-5	W 25 x L 5000mm	Under 50A	12	4560361000348
SRG-11	W 25 x L 11000mm	Under 50A	6	4560361000355
SRG-38	W 38 x L 6000mm	Under 100A	8	4560361000362

Material	Silicone rubber
Pressure	1.0MPa
Tensile strength	8.0MPa
Temperature	-50°C ~ 200°C
Coefficient of extension	600 %

Chemical resistance

○=Conformity x= Non-conformity	
10%Acetic acid	○
2%Nitric acid	△
10%Sulfuric acid	x
10%Hydracid	○
Acetone	x
Xylole	x
Gasoline	x
Methanol	○
Ethanol	○
Ammonia	△
Antifreeze	○

Approval of Food Sanitation Act No.370/201
Approval of JIS K6353(Rubber for water)
US military standard compliant goods (MIL-I-46852C)



You can watch the detailed
usage of this product on the video.
Please scan the QR code.

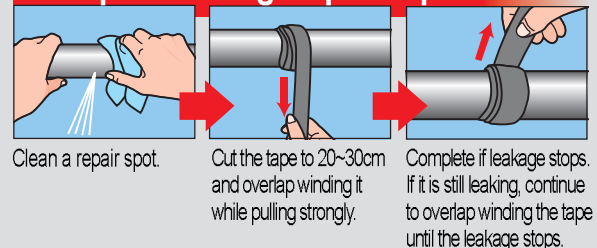
Arlon Tape Gray repair example

When pulling strongly while winding it, the tapes will self-fuse, and they will adhere to broken parts such as piping and hose leakage, bleeding, pinholes and gaps.

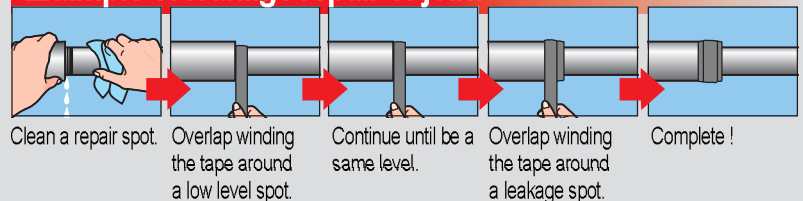
Repeat to wind the tape until stop.

Since it does not adhere to piping, any material can be repaired.

Example of leakage repair of pinhole



Example of leakage repair of joint



- Press the end of the tape against it while pulling finally.
- Since it done not adhere to piping, the winded tapa can be easily removed with scissors.
- Recommend to combine it with Quick Tape or Rector Seal for protection after completion.
- It can be used in either direction on both sides.

Only wet and wind RECTOR HIGH TAPE

Harden in 30mins

**For pipe leakage
and breakage**

**It solidifies like a metal and
can be repaired permanently.**

**TEMP.
-15~210°C**

**DRINKING
WATER LINE
OK**

Strong Bond

Various uses
Please select the size
according to location
and purpose.



- ◆ Repair for water, air, aux. steam and oil piping in factories & plants.
- ◆ Repair for elevated tank, septic tank, toilet bowl and other tank.
- ◆ Repair for plastic molding machine, construction machine and oil feed pipe.
- ◆ Repair for ship equipments during long voyage.

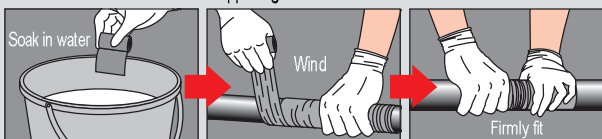
Approval of Food Sanitation Act No.370/595
Approval of EPA601 / Approval of AS4020

Easy work just to wet & wind

Easy to handle, anyone can work quickly and easily.
It is available for plastic, steel, lead, copper, stainless, concrete, ceramic, glass, PVC and etc.
Ideal for piping repair of all materials.

<How to use> ※ Please repair under non-pressure.

- ※ Close the root valve of the piping and hose before repair, and relieve pressure.
- Remove oil, rust and other dirt from the repair spot.
- Please be sure to wear the supplied gloves before work.



- ① Soak the tape in water (sea water/muddy water) for 20 ~ 30 seconds.
- ② Wind strongly while pulling the tape, and use up all the tape.
- ③ Fit in piping to squeeze the tape, and don't allow air to enter without gaps.
- ④ Bubbles come up from the tape after a while, keep making the tape fit in piping due to loose the tape during bubbling (about 10~15mins). It hardens in 30~40mins at outside temperature 21°C. Wipe by alcohol after completion if required surface finish. It can be sanded and painted also.

- Cover Rector Seal by High Tape for additional strength.
- Cover Arlon Tape by High Tape for protection.



You can watch the detailed usage of this product on the video. Please scan the QR code.

Wet and Wind



◆ Chemical resistance ○= Conformity ×=Non-conformity

20%Acetic acid	○
20%Nitric acid	○
75%Sulfuric acid	○
20%Hydracid	○
Methyl alcohol	○
10%Ammonia	○
Gasoline	○
Kerosene	○
Toluene	○
37%Hydrochloric acid	○
Corn oil	○

RECTOR HIGH TAPE

Contents ● Glass fiber tape (Aluminum packed) ● Rubber gloves ● Pat

	RH-1	RH-2	RH-3	RH-4	RH-5
Size(mm)	W25xL750	W50xL750	W50xL1500	W75xL2700	W100xL4500
Applicable dia.	Under 15A	Under 20A	Under 40A	Under 80A	Under 150A
Material	Glass fiber cloth tape				
Num of turns	6~8 windings				
Hardness	Shore D53				
Temperature	-15~210°C				
Pressure	10kg/cm ²				
JAN code	4560361000058	4560361000065	4560361000072	4560361000089	4560361000096

Usage : Repair and reinforce pipes and hoses for metals, plastics, PVC, FRP, ceramics, glass, rubber.
Particularly suitable for piping using chemicals and oil.

TEPM
-15~210°C

Only wet and wind
RECTOR QUICK TAPE

Harden in 3mins

Significant shortening of construction time for fast fixation!

Strong Bond

DRINKING WATER LINE OK



It can be repaired permanently.

Easy work that just wets and winds, repair and reinforcement of piping is completed at once.

Fixed in just 3 mins, hardened in 20 mins.

Greatly shortening your working time !

It can be used for a wide range of materials such as any metal, ceramic PVC and etc.

Approval of Food Sanitation Act No.370/595

Approval of EPA601 / Approval of AS4020



Wet and Wind

QT-1 (12pcs)
QT-2 (8pcs)
QT-3 (6pcs)

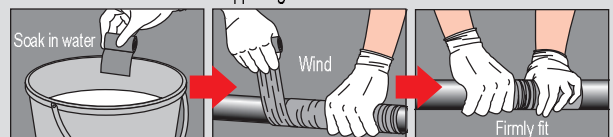
Easy work just to wet & wind

Easy to handle, anyone can work quickly and easily.

It is available for plastic, steel, lead, copper, stainless, concrete, ceramic, glass, PVC and etc.
Ideal for piping repair of all materials.

<How to use>※ Please repair under non-pressure.

※ Close the root valve of the piping and hose before repair, and relieve pressure.
Remove oil, rust and other dirt from the repair spot.
Please be sure to wear the supplied gloves before work.



- ① Soak the tape in water (sea water/muddy water) for 20 ~ 30 seconds.
- ② Wind strongly while pulling the tape, and use up all the tape.
- ③ Fit in piping to squeeze the tape, and don't allow air to enter without gaps.
- ④ Bubbles come up from the tape after a while, keep making the tape fit in piping due to loose the tape during bubbling (It fixes in 3mins). It hardens in 20mins at outside temperature 21°C. Wipe by alcohol after completion if required surface finish. It can be sanded and painted also.

- Cover Rector Seal by Quick Tape for additional strength.
- Cover Arlon Tape by Quick Tape for protection.

RECTOR QUICK TAPE

Contents ● Glass fiber tape (Aluminum packed) ● Rubber gloves ● Pat

	QT-1	QT-2	QT-3
Size(mm)	W25xL600	W50xL1200	W75xL2400
Applicable dia.	Under 25A	Under 50A	Under 80A
Material	Glass fiber cloth tape		
Num of turns	6~8 windings		
Hardness	Shore D60		
Temperature	-15~200°C		
Pressure	12.6kg/cm ² (ASTM D1599)		
JAN code	4560361000157	4560361000164	4560361000171

Usage : Repair and reinforce pipes and hoses for metals, plastics, PVC, FRP, ceramics, glass, rubber.

Particularly suitable for piping using chemicals and oil.

◆ Chemical resistance

○=Conformity ×=Non-conformity

20%Acetic acid	○
20%Nitric acid	○
75%Sulfuric acid	○
20%Hydrochloric acid	○
Methyl alcohol	○
10%Ammonia	○
Gasoline	○
Kerosene	○
Toluene	○
37%Hydrochloric acid	○
Corn oil	○

UV curing repair material RECTOR SUN SHEET

FRP Sheet



Just cut & paste it in to the necessary size at the repair spot !

Easy to use with a sense
of sticker for various repair.

**15 mins hardening
with sunlight
(UV ray)**



PIPING



ROOF



TANK



OUT DOOR



SHIP



SLIDER



CAR



Before



After

● Mold from the back of the bumper with Sun Sheet.

● Finish the surface with resin.

※ It's a repair example using Uni Solar in combination.

RECTOR SUN SHEET UV600

Material	Glass fiber UV curable epoxy acrylate resin	
Size(mm)	150×220	Thickness 1.5mm
Temperature	-20~100℃	
Tensile strength	115MPa	Elastic modulus 8.8GPa
Bending strength	235MPa	Elastic modulus 7.8GPa
Breaking extension	1.5%	Impact strength 45KJ/m ²
JAN code	4560361000140	

Usage : Repair and reinforce damaged and corroded parts such as steel plate, steel piping, FRP, glass, ceramic, PVC, and hardened vinyl chloride.

※ It may peel off for deformable materials.



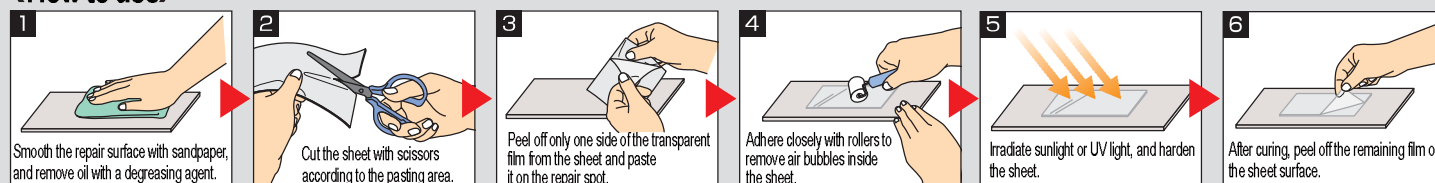
Other Uses

- Piping repair
- Sewer pipe welding reinforcement
- Steel, copper, stainless
- Air conditioning equipment
- Emergency repair of ships
- Repair of outdoor equipment (FRP boat / PWC / Fishing rod)

※ Usage prohibited

- Polyethylene
- Polypropylene
- Polycarbonate

<How to use>



※ Remove dust, mud and oil in repair spots.

※ If water is out, stop water and dry the surface before using.

※ Please be careful not to put in the air when pasting. (Remove the air with roller or hands.)

※ The surface temperature of the repair spot should be less than 80 °C. ※ Avoid outdoor work in rainy weather.



Uni Solar Hard

UV curing repair material

UNI SOLAR

Gel type

For repairing cracks & holes !

Hardening to irradiate sunlight or UV light.

Special gel quickly repair cracks & gaps.

It's suitable for emergency repair of tanks & piping.



Uni Solar Soft for soft materials such as PE tanks.

UNI SOLAR SOFT



100g



100g

GEL TYPE



Uni Solar Hard for repair of pressure part such as pipings.

UNI SOLAR HARD

UNI SOLAR

	Soft	Hard
Material	UV curable epoxy acrylate resin	
Tensile coefficient	4.6×10 ³ psi	
Extension rate	5-6%	
Bending strength	1,540kg/cm ²	
Bending coefficient	4.9×10 ³ psi	
Compressive strength	2,240kg/cm ²	
Deformation temp.	105°C	
Hardness	Barcol 35	
Permittivity	3.38	
Shear strength	304 stainless 800 psi	
JAN code	4560361000188	4560361000195

Usage : Repair and reinforce damaged and corroded parts such as steel plate, steel piping, FRP, glass, ceramic, PVC, and hardened vinyl chloride.

※ It may peel off for deformable materials.

＜How to use＞

① Dry the surface, remove the dirt and the oil with a degreasing agent, and roughen the surface with coarse sandpaper to improve adhesion.

② Squeeze Uni Solar in the shade, and apply to the repair spot.

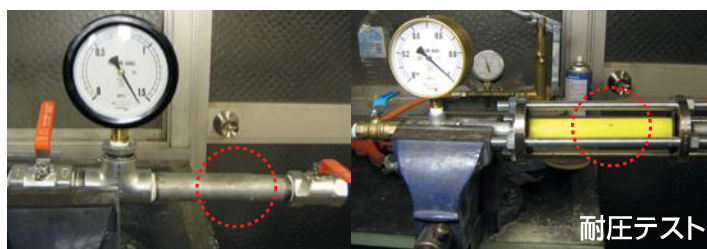
③ Irradiate with UV light or sunlight for about 3 mins.

If you paste a transparent film on the surface of Uni Solar, then block the air and cure it, it will be a clear and beautiful finish.

※ When Uni Solar Hard is felt hard, adjust the hardness by adding a small amount of acetone.

※ Since UV is difficult to reach deeply, the one with 1~2 mm of overcoating is better in the curing condition.

※ If the surface does not dry even when irradiated with UV for more than 10 mins, the surface will dry out by wiping with a industrial alcohol.



UV-LED Flashlight that will cure Sun Sheet and Uni Solar quickly after repair.

Work in indoors or place

where ultraviolet does not hit

41 LEDs



385nm UV light is cured SUN SHEET & UNI SOLAR quickly.

You can use it anywhere for portable flashlight type.

UV-LED FLASHLIGHT

Battery	AAA x 4pcs
Voltage	6V
Wavelength	385nm
JAN code	4589874320040

High Temperature putty

LAB-METAL

Aluminum putty



**For repairing
the high temp.
flange surface**

**Easy-to-use for
single component putty !**

Lab-metal (Standard)

**Harden like a metal
Cont. service temp. 537°C**

**Single component aluminum putty
It has excellent adhesion to metals
such as aluminum, steel and stainless,
and wood, resin, glass and the like.**

It is a multipurpose metal putty with good useability of single component type and strong adhesion. Adhesion and repair of damaged parts for molds, vehicles and boilers, and painting of welded parts. Heat resistant temperature is 537°C Hi-Temp type and 176°C Standard type.

If dilute it with a diluent, can apply brush and spray. Furthermore, polished after hardening it will shine like a metal.

It's suitable for repairing a surface of high temperature flange such as a cylinder head cover of main engine.



Usage : Repair and mold for metal, glass, ceramic, stone, concrete, plastic, wood and etc.

※ To use this product, a mixture of toluene and acetone 1:1 is required.
(MEK and toluene 1:1, or even acetone alone can be substituted.)

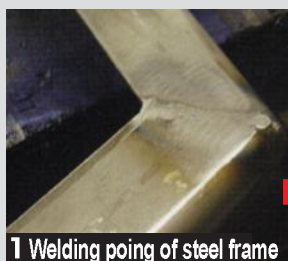
LAB-METAL

	Standard (R)	Hi-Temp (H)
Hardness	Shore D81	
Expansion coefficient	15×10 ⁻⁶ inch/inch per°F	
Tensile strength	45.4kg/cm ²	
Compressive strength	1,400 kg/cm ²	
Component	Aluminum	
Specific gravity	1.95 at 24°C	
Temperature	-40~176°C	-40~537°C
Contents	336g	336g

※ Curing time 24hrs



Lab-metal (Hi-Temp)



1 Welding joint of steel frame



2 Dilute and apply it with brush



3 After curing, buffing for finish



4 Electrostatic coating is possible



High Temperature putty
RESBOND
Ceramic putty

〈WATER SOLUBILITY〉

Stop the high temp. gas leak !



**Easy-to-use for
dispenser tube type !**

Sealing of exhaust ducts



Flange forming of exhaust pipings

Cont. service temp. **1,287°C**

For adhesion and sealing of high temperature part, protection and reinforcement of connection part. It is a high-performance repair agent with strong adhesion to all metals and ceramics and corrosion resistance to most solvents and chemicals.

Repair Agent of Boiler

- ◆ Repair of expansion joint crack
- ◆ Repair of flange gas leakage
- ◆ Repair of refractory

Other

It's suitable for a sealing material for diesel engines, gas turbines and turbochargers, for a repair agent for high temp. parts of incinerators and exhaust gas systems.

RESBOND 907GF

Temperature	1,648°C (Max. temp.) 1,287°C (Cont. ope. temp.)
Compressive strength	1 05kg/cm ²
Expansion rate	5%
Permittivity	3.0 (at 10 ³ cps)
Volume resistance	10 ¹⁰ Ω·cm
Insulation properties	145 volts/mil
Heat conductivity	6.0 (at 260°C)
Shrinkage ratio	2%
Contents	112g

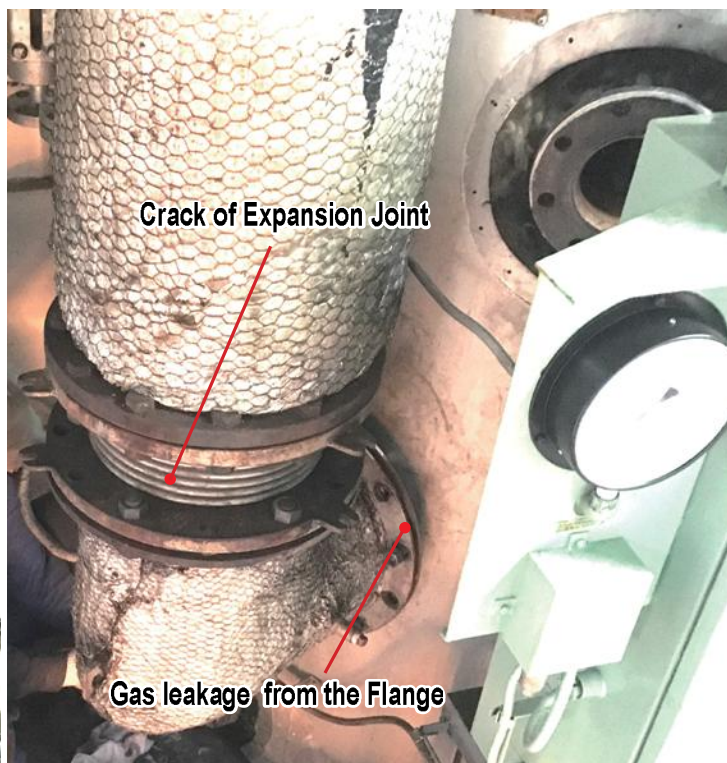
※ Curing time 24hrs

Usage : Adhesion, sealing and protection of high temperature part and piping such as metal and ceramic. It can be used for most chemical products and solvents.

※ It can not be used in areas exposed to water leakage and water.



Breakage of Refractory



Crack of Expansion Joint

Gas leakage from the Flange



Strongly prevent iron corrosion!
SELECT COAT - SABI CHANGE

Rust conversion agent

Red rust
 Fe_2O_3

**Stop corrosion by
 chemical change!**

**It's more powerful than
 rust preventive paint.**

Black rust
 Fe_3O_4

Hematite



At coating



Magnetite



**After 30 minutes
 Stop corrosion!**

Red rust (hematite) turns into black rust (magnetite)

Strongly prevent iron corrosion !

Are you troubled with rust ? ● Deck ● Handrail ● Piping ● Valve
 ● Flange ● Tank ● Machine tool

**Easy to
 prevent
 rust!**

**AQUEOUS
 PAINT**



1kg/16kg

SELECT COAT - SABI CHANGE

Material	Aqueous silicone acrylic resin paint	
Contents	1 kg	16kg
Surface Preparation	SP3 / Hand tool cleaning (Keep red rust)	
Application	2~3Layers	
Coating Method	Brush or Spray coating	
Qty for application	150~200g/m ² /Layer	
Painting interval	2~3hours	
Drying time	3~4hours (20°C)	
Temperature	130°C	
JAN code	4560361000287	

- ※ Agitate this paint thoroughly before painting.
- ※ Make sure there is no uncoated area.
- ※ In coastal areas or salt damage environments, 3 layers coating is recommended.
- ※ To keep a stable rust preventive effect, must overpaint on it.
- ※ Recommend to overpaint on this paint after 24hrs if the medium is strong.
- ※ It's easy to clean a brush after painting for aqueous paint.
- ※ If water is applied on this paint before drying, it may become white as other aqueous paints. Pay attention to the weather and its surroundings so that it will not be exposed to water during painting.

<How to use> Hand tool cleaning (SP3) is enough for the surface preparation !

No fire work required !

Painting SABI Change



Apply SABI Change after the surface preparation (SP3).

After painting



Turn into black rust about 30 mins. ※Drying time 3~4hrs

Overpainting



After drying, overpaint with general paint.



Stainless coat (Spray type)

Just spraying will be stainless steel!

STAINLESS COAT

Stainless steel paint

Just applying!

SUS316-L Coating!

Deck, Funnel, Cable tray

Piping, Valve, Flange

Bolt, Nut, Air vent

Long Life



Anti-corrosion

Anti-rust

Weatherability

■ SPRAY TYPE



650°C
for Funnel
Exh. gas piping

Standard / PU Type

It is a long-term exposure type that exerts excellent effects on rust prevention and corrosion protection in the atmosphere such as corrosive gas and sea breeze.

Super Bright / SB Type

The color tone is bright, and mirror finish is possible by polishing after hardening. With the same finish as stainless steel material, it is also ideal for repairing weld burnign of stainless steel.

High Temp. / SIL Type

It has heat resistance up to 660°C and can be used mainly for high temperature exhaust gas piping and such as boiler and incinerator, funnel.

STAINLESS COAT / SPRAY TYPE

	PU-200A	SB-200A	SIL-200A
Material	SUS316-L Pigment		
Pencil hardness	6H		
Flexibility	2mm 180°		
Contents	200mL		
Temperature	-50~110°C	-40~110°C	-62~650°C



■ BRUSH·ROLLER TYPE

Spray guns can also be used!



● Standard PU Type

● Super Bright SB Type

● High Temp. SIL Type

● Heavy-duty Anti-corrosion EP Type

Type	Contents
PU, SB, SIL	1L, 4L, 18L
EP	2L, 8L, 36L
Primer*	5K, 10K, 20K

* We also have the primer coating for Stainless coat.

■ PUTTY TYPE

SUS316-L main component
High-performance putty

Forming repair of chip, gall and erosion for metal and casting.



STAINLESS COAT / PUTTY TYPE

Material	SUS316-L, Epoxy hardener
Temperature	-50~200°C
Contents	900g
* Curing time : 24hrs	

* Since each type does not contain any harmful substances, it can be used for any material.

No Need!
Acid Pickling

Weld burning of stainless steel >>> Just coating with **STAINLESS COAT**

BEFORE

Easy Finish !

AFTER



* Super bright /SB type is used.

First-Aid kit for your ship

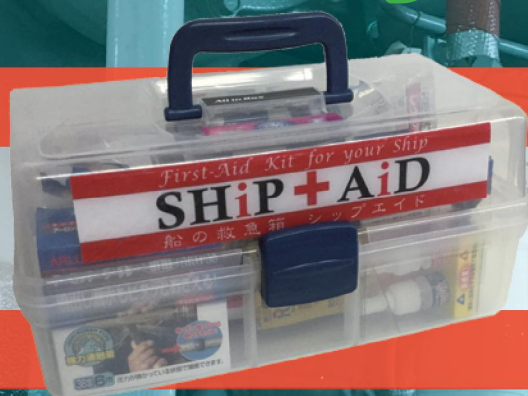
SHIP AID

Repair agent kit

Easy

Quick

Secure



First-Aid Kit for your Ship

SHiP + AiD®

船の救急箱 シップエイド

Ready for any emergency in this one!

Right repair agent on the right repair spot

First-Aid Kit for your Ship SHiP+AiD

Any repair of your ship is made possible with this one!

Let's repair your ship easy & quickly with SHiP+AiD.

You can flexibly use repair agents depending on leakage place, temperature, fluid and pressure. Leaks that could not be stopped with one type of repair agent can also be stopped with combining multiple repair agents!

Usage is infinite depending on your idea !!

“SHiP+AiD” will greatly reduce the work time-consuming to repair than ever before with a simple repair. And surely that to stop the leak, backtracking work, and eliminate repetitive tasks!

《Three of the merit of SHiP+AiD》

1. In a pinch, you can rush to the scene to take in hand the “SHiP+AiD” without hesitation. Every time, without having to look for a required repair materials, everything is OK, if you have a “SHiP+AiD” !
2. Superintendent, chief engineer & the crew can have the common recognition for the repair agent has been standing in your ship.
In “**right repair agent on the right spot**”, anyone can be reliably repair!
3. The contents of “SHiP+AiD” always be kept constant quantity, it is possible to inventory management.
The prevention of “**Three No**” : “**No more**” & “**No longer available**” when needed, are “**No more**”.

『SHiP+AiD』 supplies you the **SAFETY** & **RELIEF**.

SHiP + AiD®



Based on the advice from superintendents of ship management company, we gathered the repair materials, which are needed for ship repair, in this one. When considering to introduce SHiP+AiD, please try the standard version for your ship at the first as trial.

※Overseas shipment with this set content is possible.

SHiP + AiD® Light

A light version is compact and easy to use for fishing boats and pleasure boats, and very affordable prices! Very convenient FRP seat (Sun Sheet) in FRP ship repair is also included.

※Overseas shipment with this set content is possible, because some dangerous goods are included.

First-Aid Kit for your ship SHiP+AiD

	SHIP+AiD	SHIP+AiD Light	SHIP+AiD Deluxe
Product size	W30xD18xH15cm / 1.5kg	W30xD23xH4cm / 0.9kg	W36xD21xH20cm / 3.3kg
Applicable ship type	Merchant ship	Fishing boat, Yacht, life boat	Merchant ship
JAN code	4589874320019	4589874320026	4589874320033

※Please select according to your ship



SHiP + AiD® Deluxe

A deluxe version is including a product lineup that also supports large diameter piping and “Red Epoxy” which can repair high pressure hydraulic piping. Heavy users who want to repair anything in your ship, please consider deluxe version by all means.

※Overseas shipment with this set content is not possible, because some dangerous goods are included.



SHiP+AiD usage example

- Repair of various piping leaks (water, sea water, air & oil)
- Repair of aux. steam piping leaks
- Repair of exh. gas piping leaks
- Repair of hydraulic piping leaks
- As a reinforcing material to a thinned portion
- Repair of pump casing
- Alternative repair at areas that can not be welded
- Repair of expansion joint crack
- Repair piping under pressure

《SHIP+AiD REPAIR AGENT LIST》

Product name	Page	Model No.	Content / size	SHIP+AiD	SHIP+AiD Light	SHIP+AiD Deluxe	Num of orders※2	Remarks
RED EPOXY※1	1	—	Base resin (Red) 14.8ml Hardener (White) 14.8ml	—	—	2 sets		
RAPIDFIX	2	—	Adhesive 10ml Welding Powder 10ml	2 sets	1 set	2 sets		
ARLON TAPE GRAY	3	SRG-2	W25 x L2000mm	—	—	—		
		SRG-5	W25 x L5000mm	—	1 pc	1 pc		
		SRG-11	W25 x L11000mm	—	—	—		
		SRG-38	W38 x L6000mm	2 pcs	—	2 pcs		
RECTOR SEAL	4	EP-400	112g	2 pcs	1 pc	2 pcs		
		EP-200	56g	—	—	—		
		EP-200W	56g	—	—	—		
RECTOR HIGH TAPE	5	RH-1	W25 x L750mm	—	1 pc	—		
		RH-2	W50 x L750mm	—	—	—		
		RH-3	W50 x L1500mm	1 pc	—	1 pc		
		RH-4	W75 x L2700mm	—	—	1 pc		
		RH-5	W100 x L4500mm	—	—	—		
RECTOR QUICK TAPE	6	QT-1	W25 x L600mm	—	1 pc	—		
		QT-2	W50 x L1200mm	2 pcs	—	2 pcs		
		QT-3	W75 x L2400mm	—	—	—		
RECTOR SUN SHEET※1	7	UV600	W150 x L220 x T1.5mm	—	1 sheet	1 sheets		
UNI SOLAR	8	SOFT	100g	—	—	1 pc		
		HARD※1	100g	—	—	—		
RESBOND	9	907GF	112g	1 pc	—	1 pc		
LAB-METAL ※1	10	STANDARD (R)	336g	—	—	—		
		HIGHT (H)	336g	—	—	—		
UV-LED FLASHLIGHT	8	41LED	6V / AAA x 4pcs	—	—	1 pc		
HEAT GUN	1	RHG-1500	1500W 100V 50/60Hz	—	—	—		

※1 It can not be shipped overseas with other goods due to dangerous goods. Only individual shipment is possible as dangerous goods.

※2 When restock with the repair agent, please copy the above list and use it as a purchase order form.

※3 In addition to the above repair agents, SHIP+AiD comes with the dedicated storage box, product catalog (instruction), Instruction DVD, scissors, and sand paper.



You are able to watch movies, which are detailed usage of the product, on the website. Please scan the QR code on the left, and visit to the page.

SHIP+AiD

http://www.ny-tokyo.com/business_guide/shipaid/

For SHIP+AiD inquiries

N.Y.co.,LTD. MAKE YOU SHIP ENERGETIC !
<http://www.ny-tokyo.com>

For each repair agent inquiries

UNITEC EXPERT OF REPAIR MATERIALS
<http://www.unitec-ltd.jp>

European Distributor

AFS
All For Ships Europe